

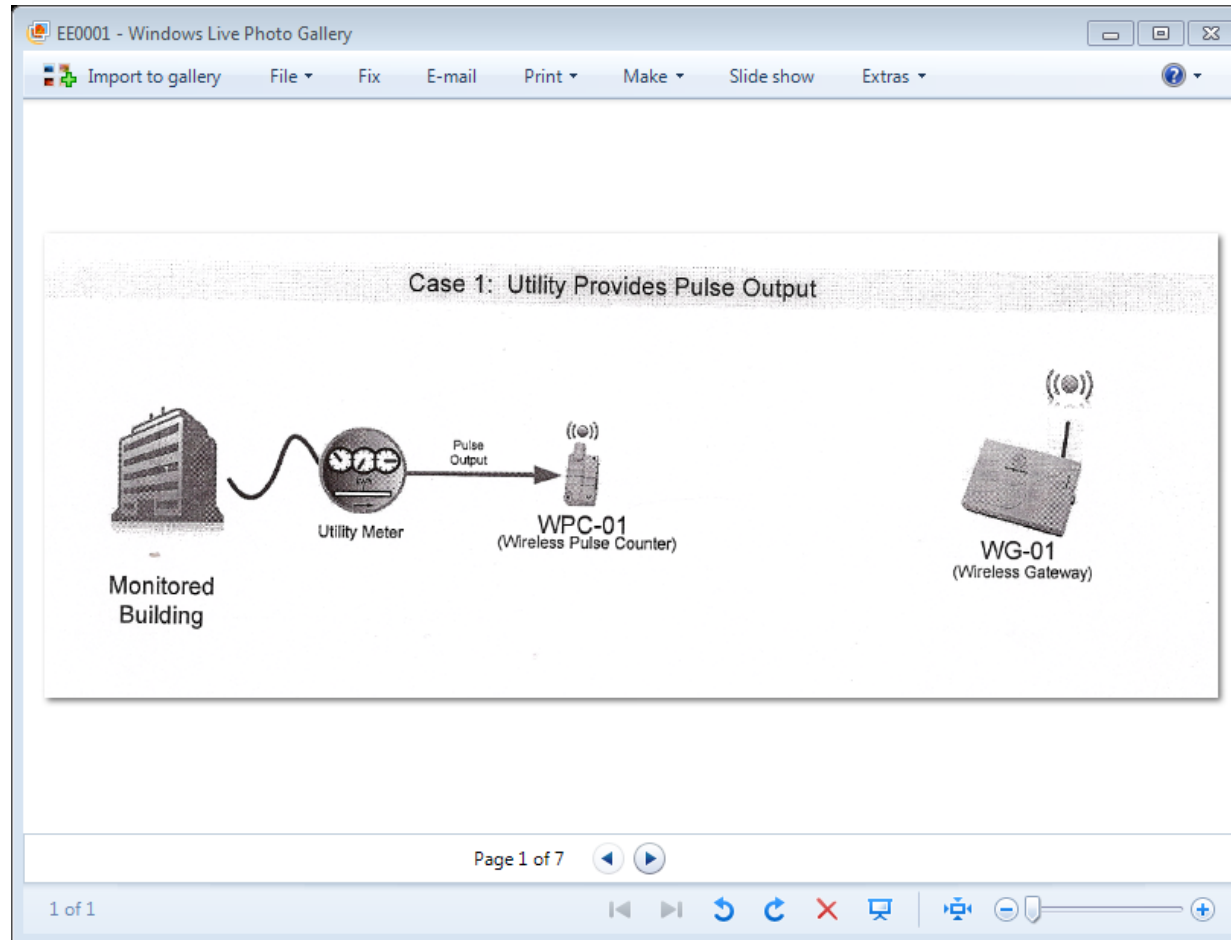
**NorthWrite**

**Energy Expert**

# Energy Expert

- Very Accurate Savings Measurement
- Daily Feedback
- Effective Graphics
- Great Motivation Tool
- Great Learning Tool
- Cost Efficient Consulting


# The Hardware

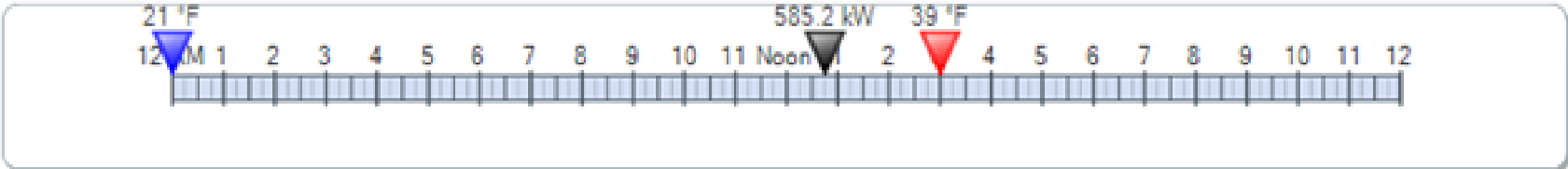


# Approximate Cost per Meter

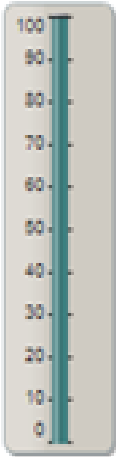

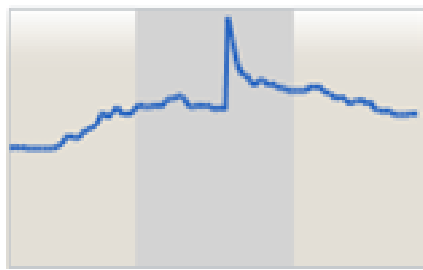
- \$2,000-\$5000 Installation
- \$1800 per year

Energy Expert ScoreCard for : CP Total


Date: 3/7/2011 

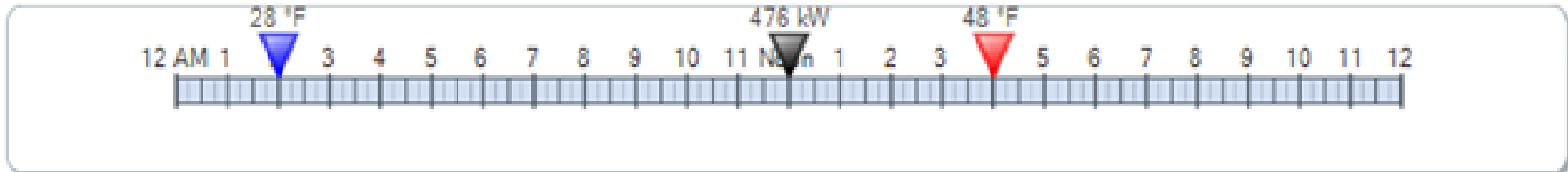


Calculated Savings / (Cost)	
<b>3/7/2011: (\$ 21)</b>	<b>Year-To-Date: \$ 581</b>
<b>Prior 30 Days: \$ 293</b>	<b>Prior 12 Months: (\$ 1,124)</b>



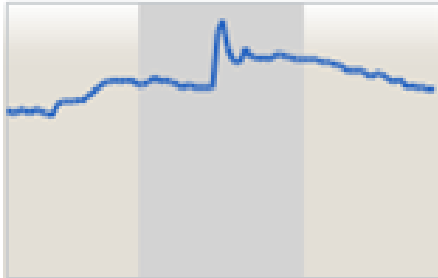
Consumption	Load Profile
  <p><b>Actual Use</b> 8,997 kWh</p> <p><b>Expected Use</b> 8,510 kWh</p> <p>Baseline 99%      Based on 24 hours <a href="#">What does this mean?</a></p>	<p><b>Peak of 585.2 kW at 12:45 PM</b></p>  <p><b>Load Profile</b></p>

### Energy Expert ScoreCard for : CP Total


Date:  

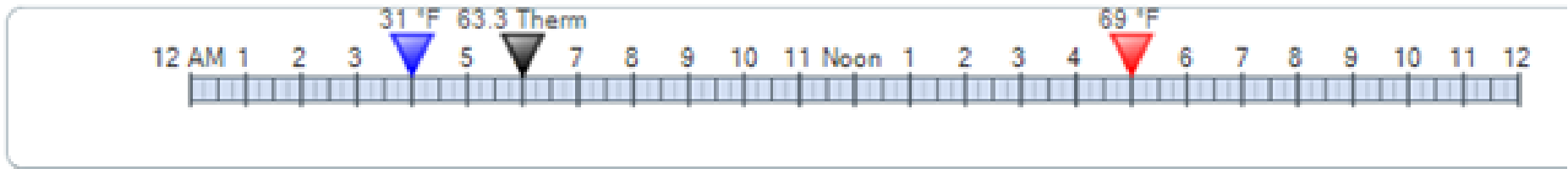


Calculated Savings / (Cost)	
<b>3/26/2011:</b> \$ 8	<b>Year-To-Date:</b> \$ 860
<b>Prior 30 Days:</b> \$ 521	<b>Prior 12 Months:</b> (\$ 1,207)

Consumption	Load Profile
  <p><b>Actual Use</b> 8,777 kwh</p> <p><b>Expected Use</b> 8,959 kwh</p> <p>Baseline 99%      Based on 24 hours <a href="#">What does this mean?</a></p>	<p><b>Peak of 476 kW at 12:00 PM</b></p>  <p><b>Load Profile</b></p>

## Energy Expert ScoreCard for : Central Plant Gas Expert



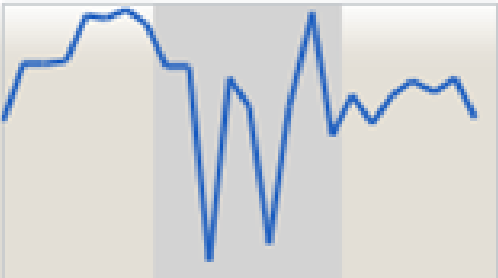
Date:  



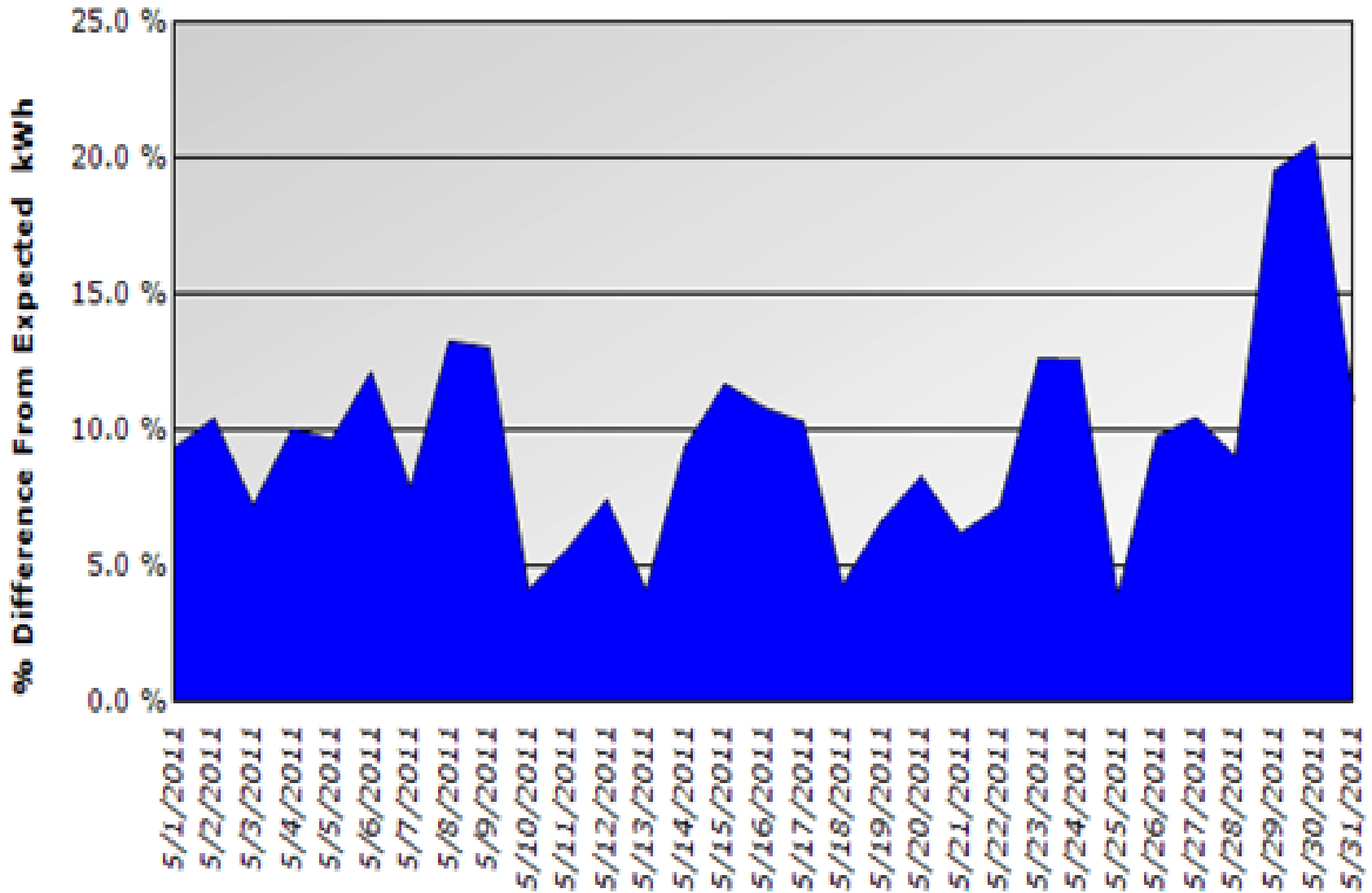
### Calculated Savings / (Cost)

**5/18/2011:** \$ 267  
**Prior 30 Days:** \$ 18,356

**Year-To-Date:** \$ 16,756  
**Prior 12 Months:** \$ 27,496

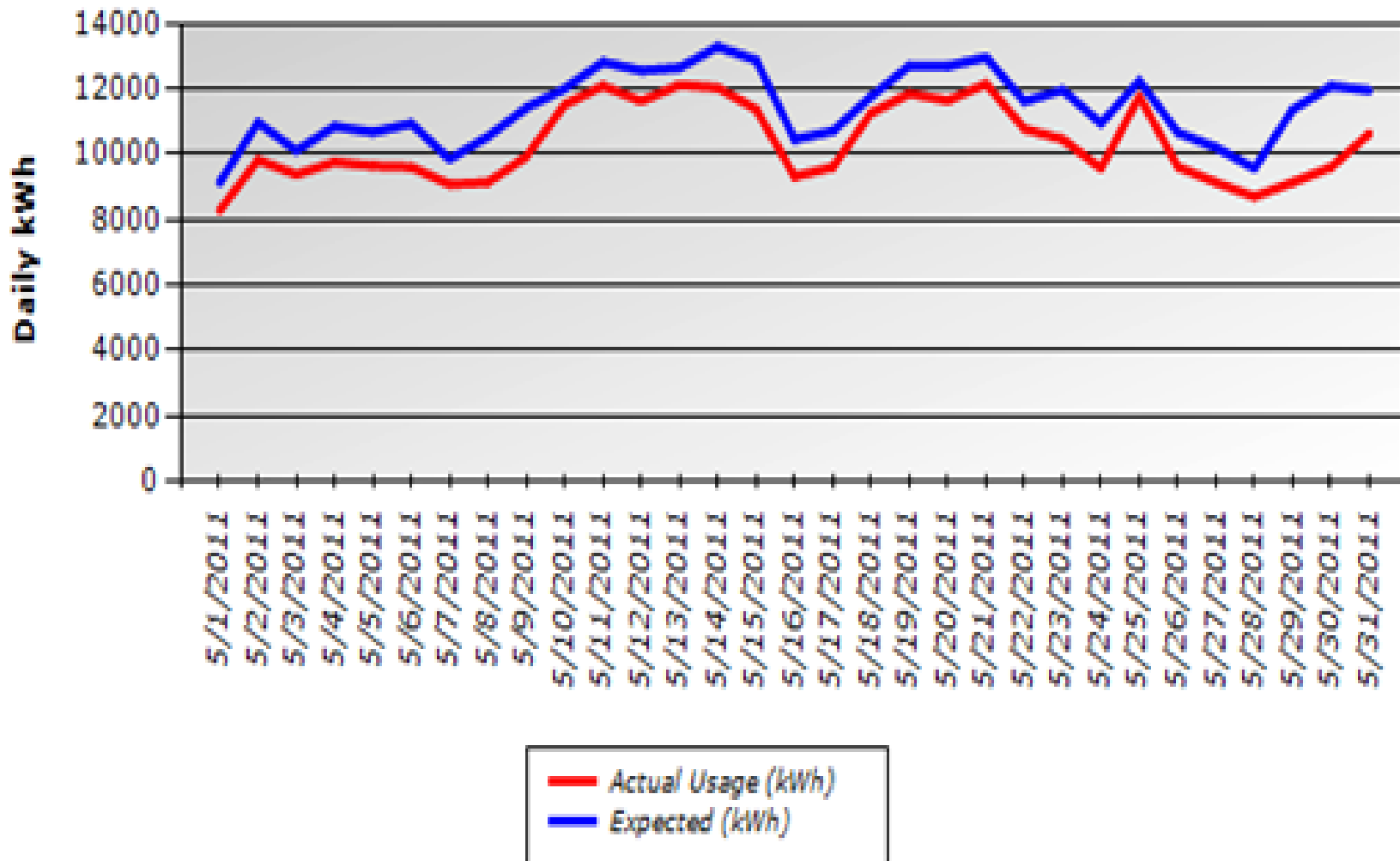
Consumption	Load Profile
<div style="display: flex; align-items: center;">  <div style="text-align: center;">  </div> <div style="margin-left: 20px;"> <p><b>Actual Use</b> 1,079 Therm</p> <p><b>Expected Use</b> 1,460 Therm</p> </div> </div> <p style="margin-top: 20px;">Baseline 29% <span style="margin-left: 50px;">Based on 24 hours</span>  <a href="#">What does this mean?</a></p>	<p style="text-align: center;"><b>Peak of 63.3 Therm at 6:00 AM</b></p>  <p style="text-align: center;"><b>Load Profile</b></p>

### Savings Compared to Expected kWh



## Energy Expert Results for: May 1, 2011 - May 31, 2011

### Expected vs Actual



Expected vs Actual

CUSUM Energy

CUSUM Emissions

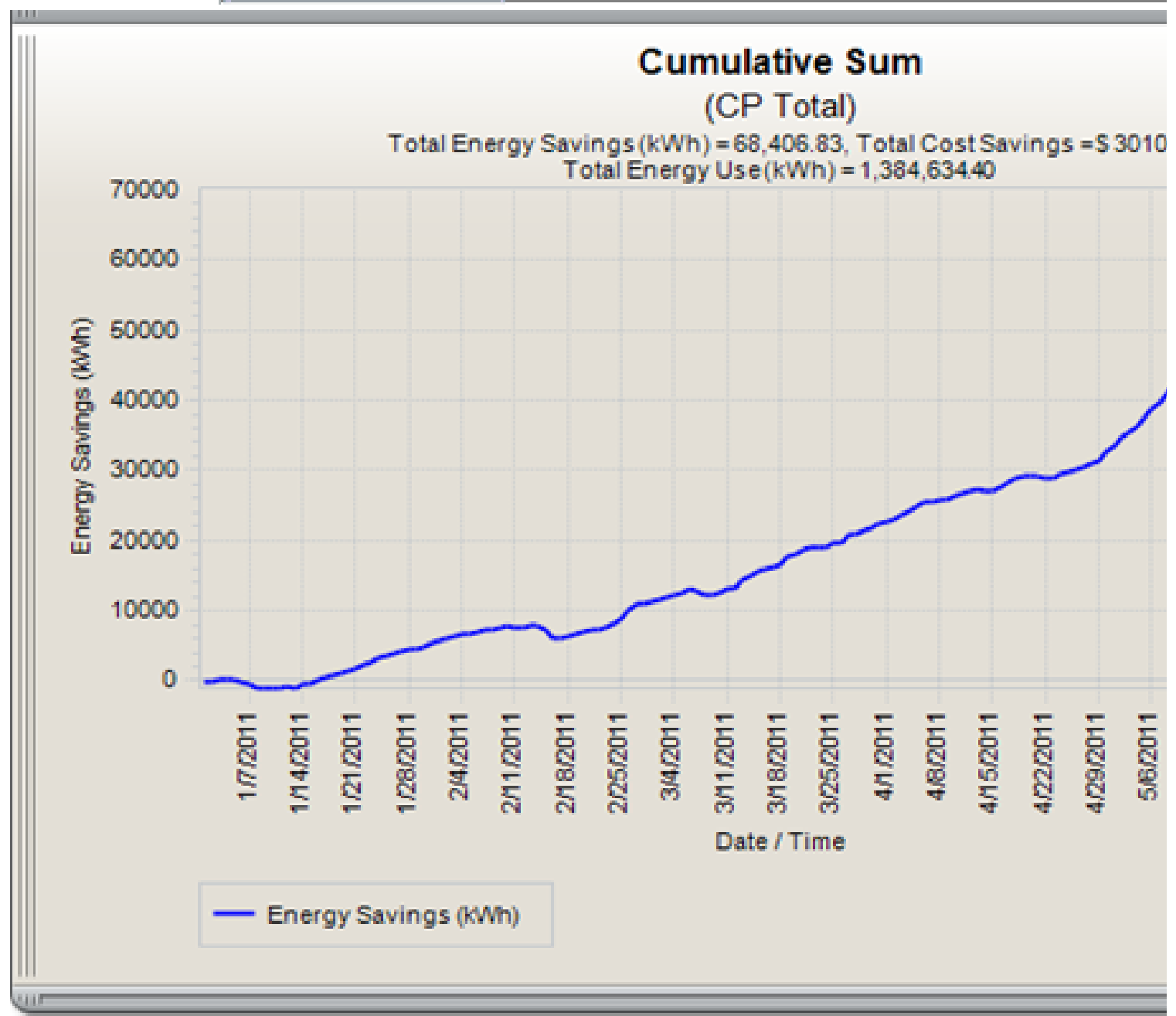
1/1/2011

Period End

6/2/2011

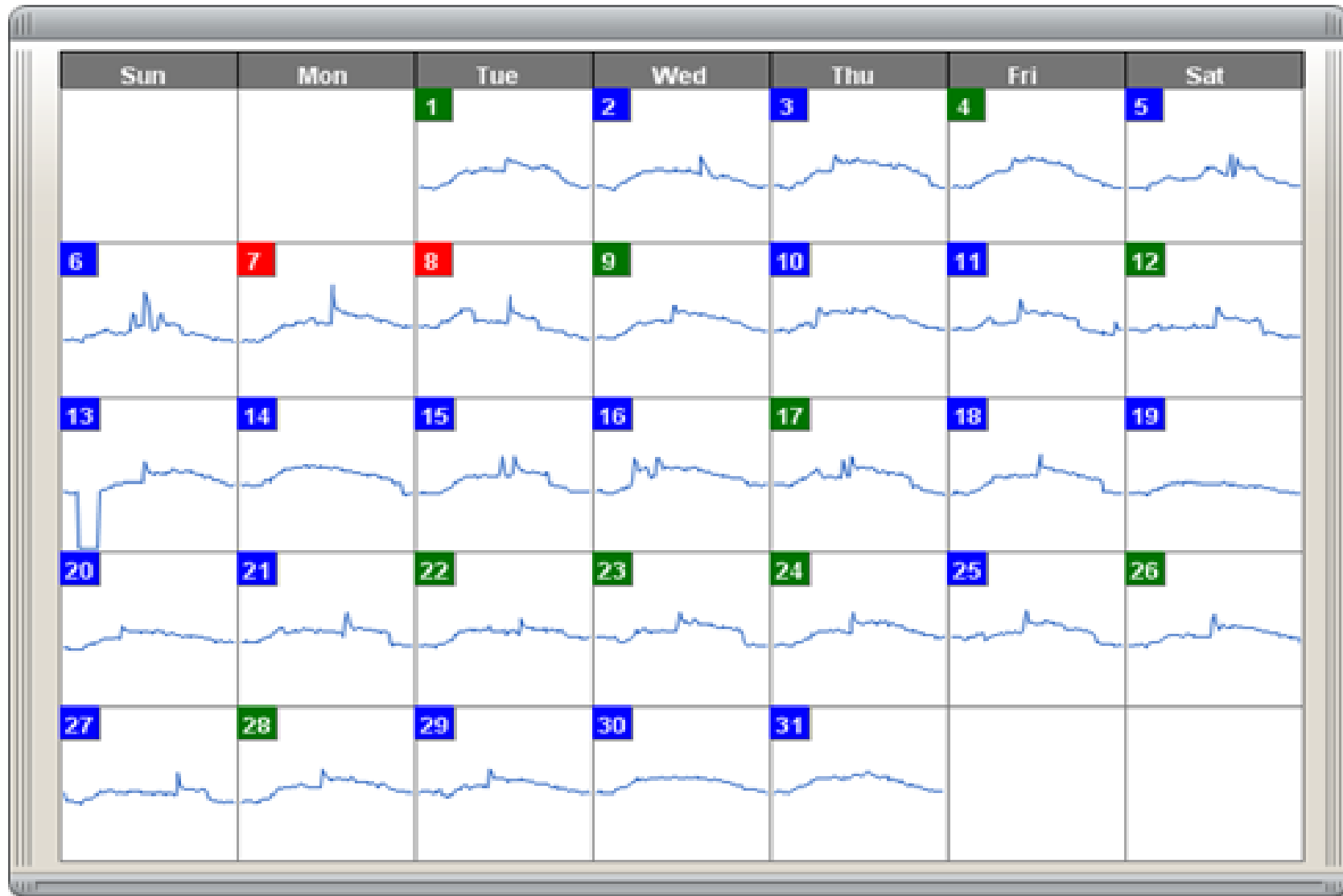
- Energy Savings
- Cost Savings

Draw Chart



### Energy Expert : CP Total

March 2011 



 - High  - Low  - Ok  - Missing Data  - EE Training  - Out of Range  - Pending

# Hospital Energy Management Cake

**CAPITAL PROJECTS---→  
(THE FROSTING)**

**OPERATIONS &  
MAINTENANCE→  
(THE CAKE)**

